

WISDOM



**PRODUCT
TECHNICAL DATA SHEET**

01 Cordless Headlamp

Wise Lite 2 MSHA Certified Explosion-proof	01
Wisdom Lamp 3 UL & CSA Class I Div 1 Certified Explosion-proof	02
Wisdom Lamp 3 ATEX ib Gb Certified Explosion-proof	03
Wisdom Lamp 3 CE Electrical Safety Certified	04
Wisdom Lamp 3 Plus CE Electrical Safety Certified	05
Wisdom Lamp 4 UL & CE Electrical Safety Certified	06
Wisdom Lamp 6 ATEX & IECEx & ANZEx ia Ma Certified Explosion-proof	07

02 Corded Cap Lamp

KL5M MSHA Certified Explosion-proof	08
KL8M MSHA Certified Explosion-proof	09
KL12M MSHA Certified Explosion-proof	10
KL5M ATEX & IECEx ia Ma Certified Explosion-proof	11
KL6M ATEX & IECEx ia Ma Certified Explosion-proof	12
KL8M ATEX & IECEx ia Ma Certified Explosion-proof	13
KL9M ATEX & IECEx ia Ma Certified Explosion-proof	14
KL12M ATEX & IECEx ia Ma Certified Explosion-proof	15
KL13M ATEX & IECEx ia Ma Certified Explosion-proof	16
KL5M CE Electrical Safety Certified	17
KL6M CE Electrical Safety Certified	18
KL8M CE Electrical Safety Certified	19
KL9M CE Electrical Safety Certified	20
KL12M CE Electrical Safety Certified	21
KL13M CE Electrical Safety Certified	22

03 Flashlight

Wisdom Aurora Pro UL & CSA Class I Div 1 Certified Explosion-proof	23
--	----

04 Personal Safety Strobe Light

Pharos 7 MSHA Certified Explosion-proof	24
Duplex CE Electrical Safety Certified	25

05	Industrial Safety Headlamp	
	Wisdom ELF CE Electrical Safety Certified	26
06	Hard Hat	
	Helipad Full Brim Type I Class G with Front and Rear Holders	27
	Helipad Full Brim Type I Class G with Front Holder	28
07	Panel Light	
	Wisdom Panel Light	29
08	Portable Single Charger	
	NWB-30 4.8V Fast-fill Portable Single Charger for Cordless Headlamp	30
	NWB-30 6.8V Fast-fill Portable Single Charger for Cordless Headlamp	31
	NWB-20 Portable Single Charger for Corded Cap Lamp	32
	NWB-25A Fast-fill Portable Single Charger for Corded Cap Lamp	33
	NWB-45A Fast-fill Portable Single Charger for Corded Cap Lamp	34
	NWF-50A Fast-fill Portable Single Charger for Flashlight	35
09	Charging Rack for Cordless Headlamp	
	NWCR-5B Fast-fill Desktop & Wall-mounted	36
	NWCR-12BL Fast-fill Double Sided Lockable	37
	NWCR-24BL Fast-fill Double Sided Lockable	38
	NWCR-36BL Fast-fill Double Sided Lockable	39
	NWCR-60BL Fast-fill Single Sided Lockable	40
	NWCR-120BL Fast-fill Double Sided Lockable	41
	NWCR-204BL Fast-fill Double Sided Lockable	42
	NWCR-12B Fast-fill Double Sided	43
	NWCR-24B Fast-fill Double Sided	44
	NWCR-36B Fast-fill Double Sided	45
	NWCR-60B Fast-fill Single Sided	46
	NWCR-120B Fast-fill Double Sided	47
	NWCR-204B Fast-fill Double Sided	48

10 Charging Rack for Corded Cap Lamp

NWCR-12 Double Sided	49
NWCR-24 Double Sided	50
NWCR-30 Single Sided	51
NWCR-60 Double Sided	52
NWCR-102 Double Sided	53
NWCR-12A Fast-fill Double Sided	54
NWCR-24A Fast-fill Double Sided	55
NWCR-30A Fast-fill Single Sided	56
NWCR-36A Fast-fill Double Sided	57
NWCR-50A Fast-fill Single Sided	58
NWCR-60A Fast-fill Double Sided	59
NWCR-100A Fast-fill Double Sided	60
NWCR-102A Fast-fill Double Sided	61
NWCR-170A Fast-fill Double Sided	62

11 Charging Rack for Flashlight

NWFR-5A Fast-fill Desktop & Wall-mounted	63
--	----

12 Charging Rack for Personal Safety Strobe Light & Industrial Safety Headlamp

NWBR-8A Fast-fill Desktop	64
NWBR-144A Fast-fill Single Sided	65

Wise Lite 2

SKU # CKC352

MSHA Certified Explosion-proof LED Headlamp
Intended for Use in Coal Mine in North America



Specifications

Length 3.31" (84.1 mm) * Width 2.70" (68.6 mm) * Depth 1.96" (49.8 mm)

0.40 lbs (184 g)

Polycarbonate material

Features

Hermetically sealed compliance with IP69

Tolerance of torture and impact

Rotatable and mountable clip onto helmet

Rechargeable appliance with Panasonic 7,000 mAh, 1,200 charge cycles Li-ion batteries

100,000 hours life span Cree LED source

Two operating modes

Ambient temperature from -4°F (-20°C) to 140°F (60°C)

6.5 hours charge time upon 5V input

167 lumens (or 8,500 Lux) and 16 hours long lasting in high brightness mode

203 yards (or 185 meters) illuminating range

140-degree illuminating angle

S.O.S effect



Wisdom Lamp 3

SKU # CKC278

UL & CSA Class I Div 1 Certified Explosion-proof LED Headlamp

Intended for Use in Potentially Explosive Gas Atmospheres except Coal Mine in NA



Specifications

Length 3.31" (84.1 mm) * Width 2.70" (68.6 mm) * Depth 1.96" (49.8 mm)

0.40 lbs (184 g)

Polycarbonate material

Features

Hermetically sealed compliance with IP69

Tolerance of torture and impact

Rotatable and mountable clip onto helmet

Rechargeable appliance with Panasonic 7,000 mAh, 1,200 charge cycles Li-ion batteries

100,000 hours life span Cree LED source

Two operating modes

Ambient temperature from -4°F (-20°C) to 104°F (40°C)

5 hours charge time upon 5V input

240 lumens (or 11,000 Lux) and 13 hours long lasting in high brightness mode

230 yards (or 210 meters) illuminating range

120-degree illuminating angle

S.O.S effect

Comply with standard UL 913 & CSA C22.2 No. 157-92



I.S. Exi, CL I, Div.1, Grps C and D, T4
-20°C ≤ Ta ≤ 40°C



801112



Wisdom Lamp 3

SKU # CKC182

ATEX ib Gb Certified Explosion-proof LED Headlamp

Intended for Use in Potentially Explosive Gas Atmospheres except Coal Mine in EU



Specifications

Length 3.31" (84.1 mm) * Width 2.70" (68.6 mm) * Depth 1.96" (49.8 mm)

0.40 lbs (184 g)

Polycarbonate material

Features

Hermetically sealed compliance with IP69

Tolerance of torture and impact

Rotatable and mountable clip onto helmet

Rechargeable appliance with Panasonic 7,000 mAh, 1,200 charge cycles Li-ion batteries

100,000 hours life span Cree LED source

Two operating modes

Ambient temperature from -4°F (-20°C) to 104°F (40°C)

5 hours charge time upon 5V input

240 lumens (or 11,000 Lux) and 13 hours long lasting in high brightness mode

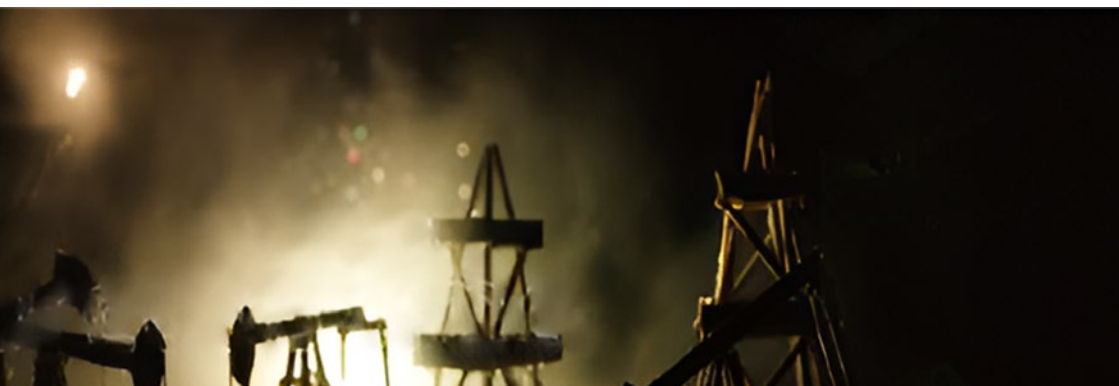
230 yards (or 210 meters) illuminating range

120-degree illuminating angle

S.O.S effect



II 2G Ex ib op is IIB T4 Gb
(-20°C ≤ Ta ≤ 40°C)



Wisdom Lamp 3

SKU # CKC197

CE Electrical Safety Certified LED Headlamp
Intended for Use in Mine



Specifications

Length 3.31" (84.1 mm) * Width 2.70" (68.6 mm) * Depth 1.96" (49.8 mm)

0.40 lbs (184 g)

Polycarbonate material

Features

Hermetically sealed compliance with IP69

Tolerance of torture and impact

Rotatable and mountable clip onto helmet

Rechargeable appliance with Panasonic 7,000 mAh, 1,200 charge cycles Li-ion batteries

100,000 hours life span Cree LED source

Two operating modes

Ambient temperature from -4°F (-20°C) to 140°F (60°C)

5 hours charge time upon 5V input

265 lumens (or 12,000 Lux) and 13 hours long lasting in high brightness mode

240 yards (or 220 meters) illuminating range

120-degree illuminating angle

S.O.S effect



Wisdom Lamp 3 Plus SKU # CKC364

CE Electrical Safety Certified LED Headlamp
Intended for Use in Mine



Specifications

Length 3.31" (84.1 mm) * Width 2.70" (68.6 mm) * Depth 1.96" (49.8 mm)

0.40 lbs (184 g)

Polycarbonate material

Features

Hermetically sealed compliance with IP69

Tolerance of torture and impact

Rotatable and mountable clip onto helmet

Rechargeable appliance with Panasonic 7,000 mAh, 1,200 charge cycles Li-ion batteries

100,000 hours life span Cree LED source

Three operating modes

Ambient temperature from -4°F (-20°C) to 140°F (60°C)

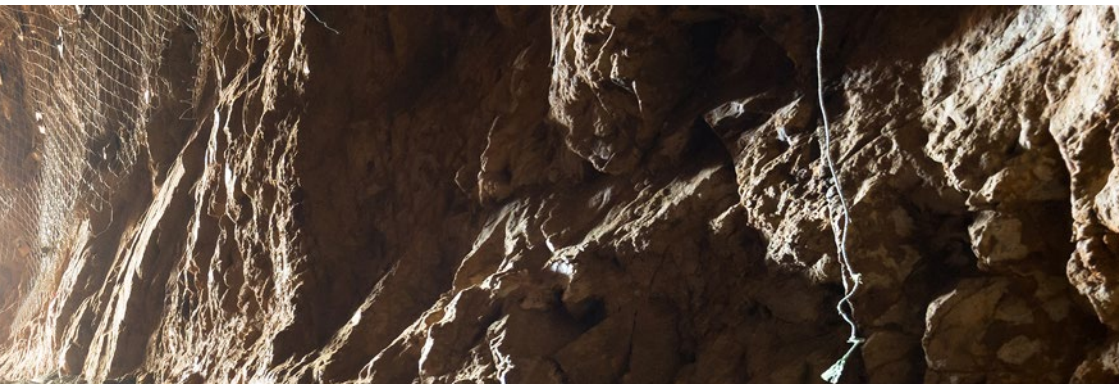
5 hours charge time upon 5V input

533 lumens (or 25,000 Lux) and 5 hours lasting in high brightness mode, 60 hours in low mode

346 yards (or 316 meters) illuminating range

120-degree illuminating angle

S.O.S effect



Wisdom Lamp 4

SKU # CKC209

UL & CE Electrical Safety Certified LED Headlamp
Intended for Use in Outdoor Activities



Specifications

Length 3.31" (84.1 mm) * Width 2.70" (68.6 mm) * Depth 1.96" (49.8 mm)

0.40 lbs (184 g)

Polycarbonate material

Features

Hermetically sealed compliance with IP69

Tolerance of torture and impact

Rotatable and mountable clip onto helmet

Rechargeable appliance with Panasonic 7,000 mAh, 1,200 charge cycles Li-ion batteries

100,000 hours life span Cree LED source

Three operating modes

Ambient temperature from -4°F (-20°C) to 140°F (60°C)

5 hours charge time upon 5V input

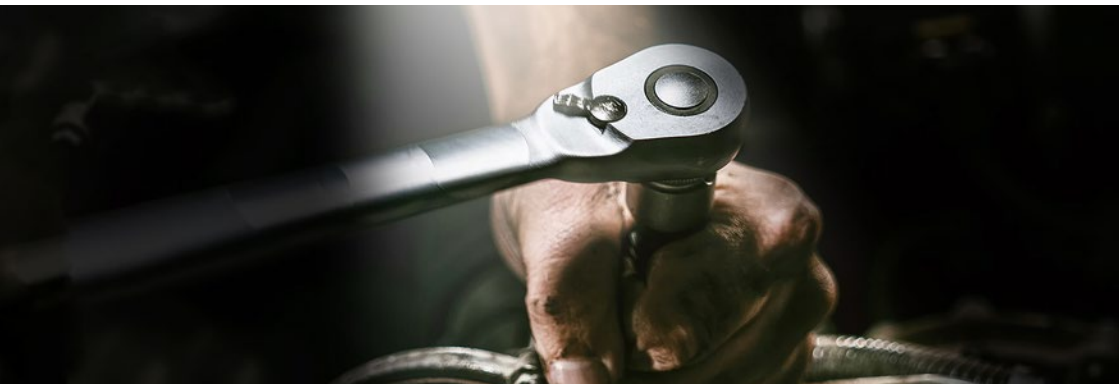
Power bank facility with DC output 5V/2A

533 lumens (or 25,000 Lux) and 5 hours lasting in high brightness mode, 60 hours in low mode

346 yards (or 316 meters) illuminating range

120-degree illuminating angle

S.O.S effect



Wisdom Lamp 6

SKU # CKC179

ATEX & IECEx & ANZEx ia Ma Certified Explosion-proof LED Headlamp
Intended for Use in Coal Mine



Specifications

Length 3.31" (84.1 mm) * Width 2.70" (68.6 mm) * Depth 1.96" (49.8 mm)

0.40 lbs (184 g)

Polycarbonate material

Features

Hermetically sealed compliance with IP69

Tolerance of torture and impact

Rotatable and mountable clip onto helmet

Rechargeable appliance with Panasonic 7,000 mAh, 1,200 charge cycles Li-ion batteries

100,000 hours life span Cree LED source

Two operating modes

Ambient temperature from 32°F (0°C) to 104°F (40°C)

5.5 hours charge time upon a dedicated charger provided by WISDOM, with output of 6.8Vdc

240 lumens (or 11,000 Lux) and 13 hours long lasting in high brightness mode

230 yards (or 210 meters) illuminating range

120-degree illuminating angle

S.O.S effect



I M1 Ex ia op is I Ma EN 60079-35-1
(0°C ≤ Ta ≤ 40°C)



Ex ia op is I Ma IEC 60079-35-1
(0°C ≤ Ta ≤ 40°C)

ANZEx



EAC

CE



KL5M SKU # CKL321

MSHA Certified Explosion-proof LED Cap Lamp
Intended for Use in Coal Mine in North America



Specifications

Lamp Width 2.95" (75 mm) * Depth 2.91" (74 mm) * Height 3.03" (77 mm)

Battery Width 3.69" (93.8 mm) * Depth 1.50" (38.3 mm) * Height 3.46" (88 mm)

1.09 lbs (495 g)

Polycarbonate material

Features

Hermetically sealed compliance with IP69

Tolerance of torture and impact

Mountable clip onto helmet

Rechargeable appliance with Panasonic 8,700 mAh, 1,200 charge cycles Li-ion batteries

100,000 hours life span Cree LED source

Two operating modes

Ambient temperature from -4°F (-20°C) to 140°F (60°C)

6.5 hours charge time upon a dedicated charger provided by WISDOM, with output of 4.2Vdc

279 lumens (or 20,000 Lux) and 16 hours long lasting in high brightness mode

310 yards (or 283 meters) illuminating range

120-degree illuminating angle

S.O.S effect



KL8M SKU # CKL323

MSHA Certified Explosion-proof LED Cap Lamp
Intended for Use in Coal Mine in North America



Specifications

Lamp Width 2.95" (75 mm) * Depth 2.91" (74 mm) * Height 3.03" (77 mm)

Battery Width 3.69" (93.8 mm) * Depth 1.50" (38.3 mm) * Height 4.17" (106 mm)

1.20 lbs (548 g)

Polycarbonate material

Features

Hermetically sealed compliance with IP69

Tolerance of torture and impact

Mountable clip onto helmet

Rechargeable appliance with Panasonic 11,600 mAh, 1,200 charge cycles Li-ion batteries

100,000 hours life span Cree LED source

Two operating modes

Ambient temperature from -4°F (-20°C) to 140°F (60°C)

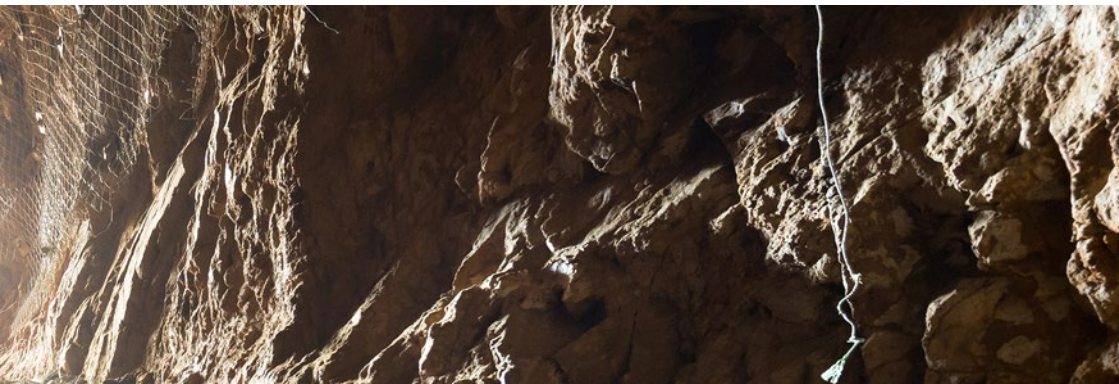
8.5 hours charge time upon a dedicated charger provided by WISDOM, with output of 4.2Vdc

279 lumens (or 20,000 Lux) and 20 hours long lasting in high brightness mode

310 yards (or 283 meters) illuminating range

120-degree illuminating angle

S.O.S effect



KL12M

SKU # CKL326

MSHA Certified Explosion-proof LED Cap Lamp
Intended for Use in Coal Mine in North America



Specifications

Lamp Width 2.95" (75 mm) * Depth 2.91" (74 mm) * Height 3.03" (77 mm)

Battery Width 3.69" (93.8 mm) * Depth 1.50" (38.3 mm) * Height 4.17" (106 mm)

1.20 lbs (548 g)

Polycarbonate material

Features

Hermetically sealed compliance with IP69

Tolerance of torture and impact

Mountable clip onto helmet

Rechargeable appliance with Panasonic 14,000 mAh, 1,200 charge cycles Li-ion batteries

100,000 hours life span Cree LED source

Two operating modes

Ambient temperature from -4°F (-20°C) to 140°F (60°C)

6.5 hours charge time upon a dedicated charger provided by WISDOM, with output of 4.56Vdc

279 lumens (or 20,000 Lux) and 24 hours long lasting in high brightness mode

310 yards (or 283 meters) illuminating range

120-degree illuminating angle

S.O.S effect



KL5M SKU # CKL355

**ATEX & IECEx ia Ma Certified Explosion-proof LED Cap Lamp
Intended for Use in Coal Mine**



Specifications

Lamp Width 2.95" (75 mm) * Depth 2.91" (74 mm) * Height 3.03" (77 mm)

Battery Width 3.69" (93.8 mm) * Depth 1.50" (38.3 mm) * Height 3.46" (88 mm)

1.09 lbs (495 g)

Polycarbonate material

Features

Hermetically sealed compliance with IP69

Tolerance of torture and impact

Mountable clip onto helmet

Rechargeable appliance with Panasonic 7,800 mAh, 1,200 charge cycles Li-ion batteries

100,000 hours life span Cree LED source

Two operating modes

Ambient temperature from 32°F (0°C) to 104°F (40°C)

6.5 hours charge time upon a dedicated charger provided by WISDOM, with output of 4.2Vdc

340 lumens (or 24,000 Lux) and 13 hours long lasting in high brightness mode

340 yards (or 310 meters) illuminating range

120-degree illuminating angle

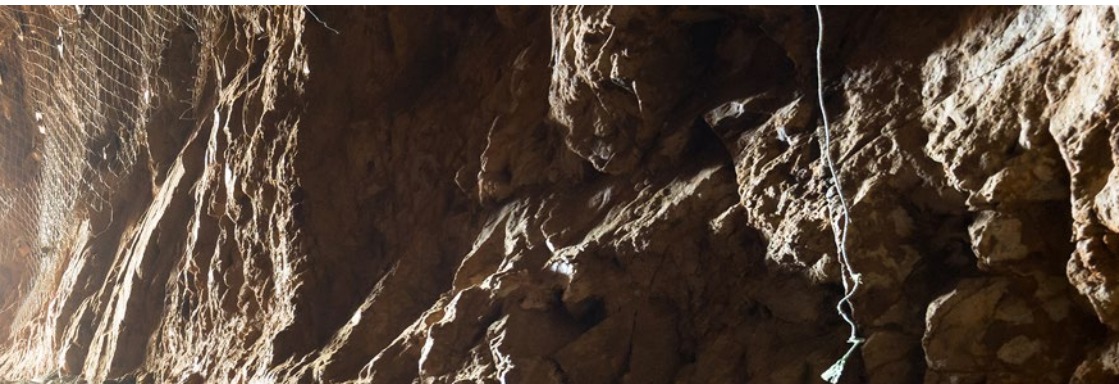
S.O.S effect



I M1 Ex ia I Ma EN 60079-35-1
(0°C ≤ Ta ≤ 40°C)



Ex ia I Ma IEC 60079-35-1
(0°C ≤ Ta ≤ 40°C)



KL6M SKU # CKL432

ATEX & IECEx ia Ma Certified Explosion-proof LED Cap Lamp
Intended for Use in Coal Mine



Specifications

Lamp Width 2.75" (70 mm) * Depth 2.91" (74 mm) * Height 3.03" (77 mm)

Battery Width 3.69" (93.8 mm) * Depth 1.50" (38.3 mm) * Height 3.46" (88 mm)

1.07 lbs (487 g)

Polycarbonate material

Features

Hermetically sealed compliance with IP69

Tolerance of torture and impact

Mountable clip onto helmet

Rechargeable appliance with Panasonic 7,800 mAh, 1,200 charge cycles Li-ion batteries

100,000 hours life span Cree LED source

Two operating modes

Ambient temperature from 32°F (0°C) to 104°F (40°C)

2 hours charge time upon a dedicated charger provided by WISDOM, with output of 4.65Vdc

340 lumens (or 24,000 Lux) and 13 hours long lasting in high brightness mode

340 yards (or 310 meters) illuminating range

120-degree illuminating angle

S.O.S effect



IM1 Ex ia I Ma EN 60079-35-1
(0°C ≤ Ta ≤ 40°C)



Ex ia I Ma IEC 60079-35-1
(0°C ≤ Ta ≤ 40°C)



KL8M SKU # CKL307

**ATEX & IECEx ia Ma Certified Explosion-proof LED Cap Lamp
Intended for Use in Coal Mine**



Specifications

Lamp Width 2.95" (75 mm) * Depth 2.91" (74 mm) * Height 3.03" (77 mm)

Battery Width 3.69" (93.8 mm) * Depth 1.50" (38.3 mm) * Height 4.17" (106 mm)

1.20 lbs (548 g)

Polycarbonate material

Features

Hermetically sealed compliance with IP69

Tolerance of torture and impact

Mountable clip onto helmet

Rechargeable appliance with Panasonic 10,400 mAh, 1,200 charge cycles Li-ion batteries

100,000 hours life span Cree LED source

Two operating modes

Ambient temperature from 32°F (0°C) to 104°F (40°C)

8.5 hours charge time upon a dedicated charger provided by WISDOM, with output of 4.2Vdc

430 lumens (or 30,000 Lux) and 13 hours long lasting in high brightness mode

378 yards (or 346 meters) illuminating range

120-degree illuminating angle

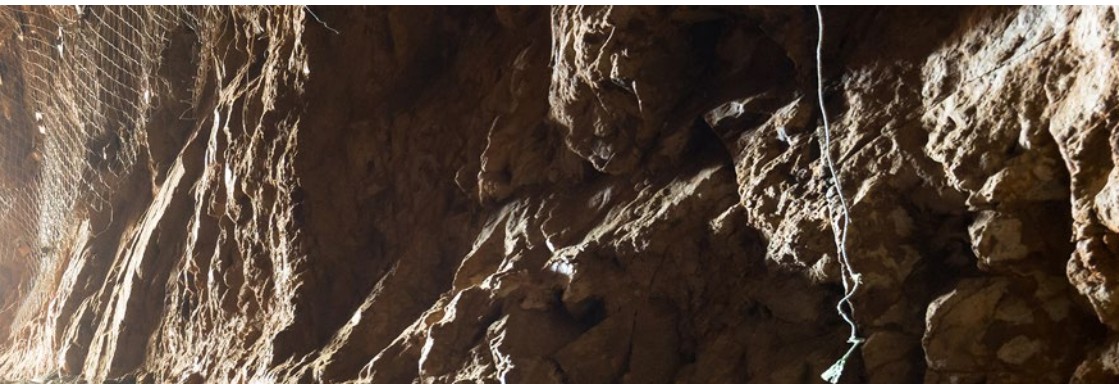
S.O.S effect



I M1 Ex ia I Ma EN 60079-35-1
(0°C ≤ Ta ≤ 40°C)



Ex ia I Ma IEC 60079-35-1
(0°C ≤ Ta ≤ 40°C)



KL9M SKU # CKL433

ATEX & IECEx ia Ma Certified Explosion-proof LED Cap Lamp
Intended for Use in Coal Mine



Specifications

Lamp Width 2.75" (70 mm) * Depth 2.91" (74 mm) * Height 3.03" (77 mm)

Battery Width 3.69" (93.8 mm) * Depth 1.50" (38.3 mm) * Height 4.17" (106 mm)

1.20 lbs (540 g)

Polycarbonate material

Features

Hermetically sealed compliance with IP69

Tolerance of torture and impact

Mountable clip onto helmet

Rechargeable appliance with Panasonic 10,400 mAh, 1,200 charge cycles Li-ion batteries

100,000 hours life span Cree LED source

Two operating modes

Ambient temperature from 32°F (0°C) to 104°F (40°C)

2.5 hours charge time upon a dedicated charger provided by WISDOM, with output of 4.65Vdc

430 lumens (or 30,000 Lux) and 13 hours long lasting in high brightness mode

378 yards (or 346 meters) illuminating range

120-degree illuminating angle

S.O.S effect



I M1 Ex ia I Ma EN 60079-35-1
(0°C ≤ Ta ≤ 40°C)



Ex ia I Ma IEC 60079-35-1
(0°C ≤ Ta ≤ 40°C)



KL12M

SKU # CKL308

ATEX & IECEx ia Ma Certified Explosion-proof LED Cap Lamp
Intended for Use in Coal Mine



Specifications

Lamp Width 2.95" (75 mm) * Depth 2.91" (74 mm) * Height 3.03" (77 mm)

Battery Width 3.69" (93.8 mm) * Depth 1.50" (38.3 mm) * Height 4.17" (106 mm)

1.20 lbs (548 g)

Polycarbonate material

Features

Hermetically sealed compliance with IP69

Tolerance of torture and impact

Mountable clip onto helmet

Rechargeable appliance with Panasonic 14,000 mAh, 1,200 charge cycles Li-ion batteries

100,000 hours life span Cree LED source

Two operating modes

Ambient temperature from 32°F (0°C) to 104°F (40°C)

10 hours charge time upon a dedicated charger provided by WISDOM, with output of 4.2Vdc

512 lumens (or 35,000 Lux) and 13 hours long lasting in high brightness mode

404 yards (or 369 meters) illuminating range

120-degree illuminating angle

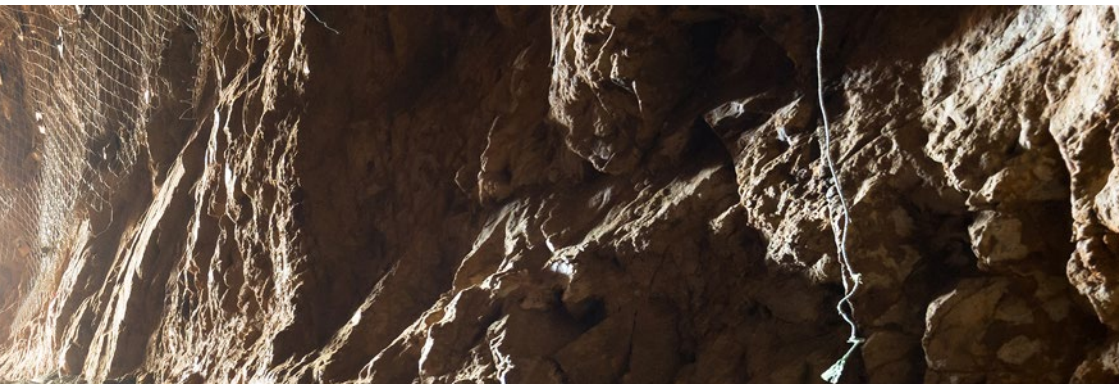
S.O.S effect



I M1 Ex ia I Ma EN 60079-35-1
(0°C ≤ Ta ≤ 40°C)



Ex ia I Ma IEC 60079-35-1
(0°C ≤ Ta ≤ 40°C)



KL13M

SKU # CKL434

ATEX & IECEx ia Ma Certified Explosion-proof LED Cap Lamp
Intended for Use in Coal Mine



Specifications

Lamp Width 2.75" (70 mm) * Depth 2.91" (74 mm) * Height 3.03" (77 mm)

Battery Width 3.69" (93.8 mm) * Depth 1.50" (38.3 mm) * Height 4.17" (106 mm)

1.20 lbs (540 g)

Polycarbonate material

Features

Hermetically sealed compliance with IP69

Tolerance of torture and impact

Mountable clip onto helmet

Rechargeable appliance with Panasonic 14,000 mAh, 1,200 charge cycles Li-ion batteries

100,000 hours life span Cree LED source

Two operating modes

Ambient temperature from 32°F (0°C) to 104°F (40°C)

4 hours charge time upon a dedicated charger provided by WISDOM, with output of 4.65Vdc

512 lumens (or 35,000 Lux) and 13 hours long lasting in high brightness mode

404 yards (or 369 meters) illuminating range

120-degree illuminating angle

S.O.S effect



Ex ia I Ma EN 60079-35-1
(0°C ≤ Ta ≤ 40°C)



Ex ia I Ma IEC 60079-35-1
(0°C ≤ Ta ≤ 40°C)



KL5M

SKU # CKL364

CE Electrical Safety Certified LED Cap Lamp
Intended for Use in Mine



Specifications

Lamp Width 2.95" (75 mm) * Depth 2.91" (74 mm) * Height 3.03" (77 mm)

Battery Width 3.69" (93.8 mm) * Depth 1.50" (38.3 mm) * Height 3.46" (88 mm)

1.09 lbs (495 g)

Polycarbonate material

Features

Hermetically sealed compliance with IP69

Tolerance of torture and impact

Mountable clip onto helmet

Rechargeable appliance with Panasonic 7,800 mAh, 1,200 charge cycles Li-ion batteries

100,000 hours life span Cree LED source

Two operating modes

Ambient temperature from -4°F (-20°C) to 140°F (60°C)

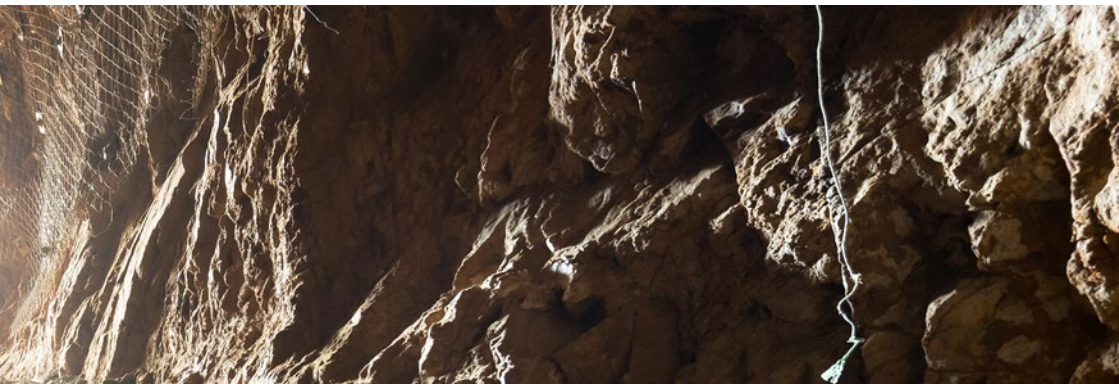
6.5 hours charge time upon a dedicated charger provided by WISDOM, with output of 4.2Vdc

340 lumens (or 24,000 Lux) and 13 hours long lasting in high brightness mode

340 yards (or 310 meters) illuminating range

120-degree illuminating angle

S.O.S effect



KL6M

SKU # CKL383

CE Electrical Safety Certified LED Cap Lamp
Intended for Use in Mine



Specifications

Lamp Width 2.75" (70 mm) * Depth 2.91" (74 mm) * Height 3.03" (77 mm)

Battery Width 3.69" (93.8 mm) * Depth 1.50" (38.3 mm) * Height 3.46" (88 mm)

1.07 lbs (487 g)

Polycarbonate material

Features

Hermetically sealed compliance with IP69

Tolerance of torture and impact

Mountable clip onto helmet

Rechargeable appliance with Panasonic 7,800 mAh, 1,200 charge cycles Li-ion batteries

100,000 hours life span Cree LED source

Two operating modes

Ambient temperature from -4°F (-20°C) to 140°F (60°C)

2 hours charge time upon a dedicated charger provided by WISDOM, with output of 4.65Vdc

340 lumens (or 24,000 Lux) and 13 hours long lasting in high brightness mode

340 yards (or 310 meters) illuminating range

120-degree illuminating angle

S.O.S effect



KL8M

SKU # CKL365

CE Electrical Safety Certified LED Cap Lamp
Intended for Use in Mine



Specifications

Lamp Width 2.95" (75 mm) * Depth 2.91" (74 mm) * Height 3.03" (77 mm)

Battery Width 3.69" (93.8 mm) * Depth 1.50" (38.3 mm) * Height 4.17" (106 mm)

1.20 lbs (548 g)

Polycarbonate material

Features

Hermetically sealed compliance with IP69

Tolerance of torture and impact

Mountable clip onto helmet

Rechargeable appliance with Panasonic 10,400 mAh, 1,200 charge cycles Li-ion batteries

100,000 hours life span Cree LED source

Two operating modes

Ambient temperature from -4°F (-20°C) to 140°F (60°C)

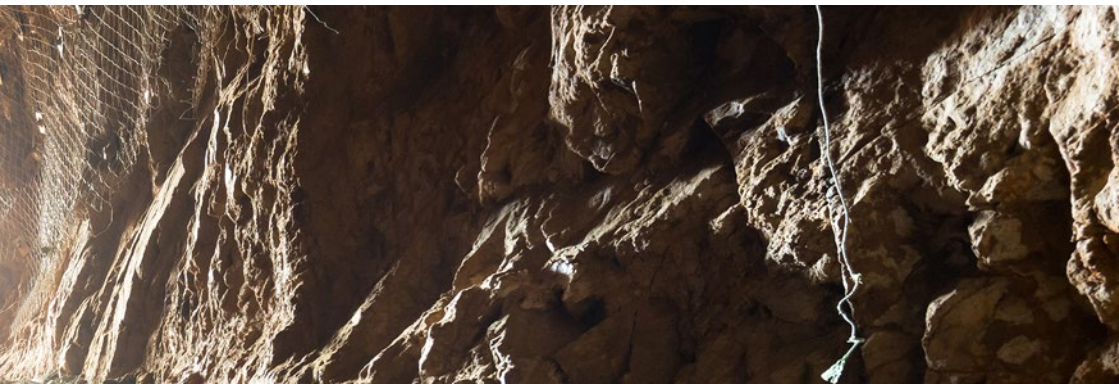
8.5 hours charge time upon a dedicated charger provided by WISDOM, with output of 4.2Vdc

430 lumens (or 30,000 Lux) and 13 hours long lasting in high brightness mode

378 yards (or 346 meters) illuminating range

120-degree illuminating angle

S.O.S effect



KL9M

SKU # CKL382

CE Electrical Safety Certified LED Cap Lamp

Intended for Use in Mine



Specifications

Lamp Width 2.75" (70 mm) * Depth 2.91" (74 mm) * Height 3.03" (77 mm)

Battery Width 3.69" (93.8 mm) * Depth 1.50" (38.3 mm) * Height 4.17" (106 mm)

1.20 lbs (540 g)

Polycarbonate material

Features

Hermetically sealed compliance with IP69

Tolerance of torture and impact

Mountable clip onto helmet

Rechargeable appliance with Panasonic 10,400 mAh, 1,200 charge cycles Li-ion batteries

100,000 hours life span Cree LED source

Two operating modes

Ambient temperature from -4°F (-20°C) to 140°F (60°C)

2.5 hours charge time upon a dedicated charger provided by WISDOM, with output of 4.65Vdc

430 lumens (or 30,000 Lux) and 13 hours long lasting in high brightness mode

378 yards (or 346 meters) illuminating range

120-degree illuminating angle

S.O.S effect



KL12M

SKU # CKL353

CE Electrical Safety Certified LED Cap Lamp
Intended for Use in Mine



Specifications

Lamp Width 2.95" (75 mm) * Depth 2.91" (74 mm) * Height 3.03" (77 mm)

Battery Width 3.69" (93.8 mm) * Depth 1.50" (38.3 mm) * Height 4.17" (106 mm)

1.20 lbs (548 g)

Polycarbonate material

Features

Hermetically sealed compliance with IP69

Tolerance of torture and impact

Mountable clip onto helmet

Rechargeable appliance with Panasonic 14,000 mAh, 1,200 charge cycles Li-ion batteries

100,000 hours life span Cree LED source

Two operating modes

Ambient temperature from -4°F (-20°C) to 140°F (60°C)

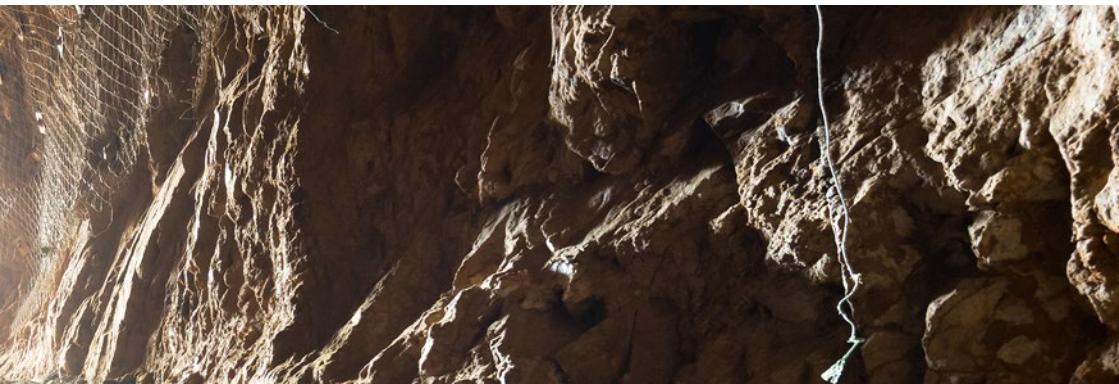
6.5 hours charge time upon a dedicated charger provided by WISDOM, with output of 4.56Vdc

512 lumens (or 35,000 Lux) and 13 hours long lasting in high brightness mode

404 yards (or 369 meters) illuminating range

120-degree illuminating angle

S.O.S effect



KL13M SKU # CKL381

CE Electrical Safety Certified LED Cap Lamp
Intended for Use in Mine



Specifications

Lamp Width 2.75" (70 mm) * Depth 2.91" (74 mm) * Height 3.03" (77 mm)

Battery Width 3.69" (93.8 mm) * Depth 1.50" (38.3 mm) * Height 4.17" (106 mm)

1.20 lbs (540 g)

Polycarbonate material

Features

Hermetically sealed compliance with IP69

Tolerance of torture and impact

Mountable clip onto helmet

Rechargeable appliance with Panasonic 14,000 mAh, 1,200 charge cycles Li-ion batteries

100,000 hours life span Cree LED source

Two operating modes

Ambient temperature from -4°F (-20°C) to 140°F (60°C)

4 hours charge time upon a dedicated charger provided by WISDOM, with output of 4.65Vdc

512 lumens (or 35,000 Lux) and 13 hours long lasting in high brightness mode

404 yards (or 369 meters) illuminating range

120-degree illuminating angle

S.O.S effect



WISDOM Aurora Pro SKU # CWT012

UL & CSA Class I Div 1 Certified Explosion-proof LED Flashlight

Intended for Use in Potentially Explosive Gas Atmospheres except Coal Mine in NA



Specifications

Length 7.70" (195.6 mm) * OD 2.60" (66.1 mm)

1.10 lbs (500 g)

Cold forged aluminum housing with hard anodized finish

Features

Hermetically sealed compliance with IP69

Tolerance of torture and impact

Rechargeable appliance with Panasonic 14,000 mAh, 1,200 charge cycles Li-ion batteries

100,000 hours life span Cree LED source

237 illumination levels

21W LED output power

Ambient temperature from -4°F (-20°C) to 104°F (40°C)

3.5 hours charge time upon a dedicated charger provided by WISDOM, with output of 4.2Vdc

3,192 lumens (or 120,000 Lux) and 4.5 hours working time upon the highest mode setting

Over 300 hours long lasting at the lowest mode setting

2,187 yards (or 2,000 meters) illuminating range

S.O.S effect

Comply with standard UL 913 & CSA C22.2 No. 157-92



I.S. Exi, CL I, Div.1, Grps C and D, T4
-20°C ≤ Ta ≤ 40°C



801112



Pharos 7

MSHA Certified Explosion-proof Personal Safety Strobe Light
Intended for Use in Coal Mine in North America



Specifications

Length 2.48" (63 mm) * Width 1.89" (48 mm) * Depth 0.59" (15 mm)

0.08 lbs (38 g)

Polycarbonate material

Features

Hermetically sealed compliance with IP69

Tolerance of torture and impact

Rechargeable appliance with 700 mAh, 500 charge cycles Li-ion battery

Two operating modes

Ambient temperature from -4°F (-20°C) to 140°F (60°C)

2 hours charge time upon 5V input

437 yards (or 400 meters) visible range

S.O.S effect

Working Time

- | | | |
|-------------------------------------|--|--------------|
| <input type="checkbox"/> | 9.5 hours on steady, 50 hours on flash | SKU # CKH063 |
| <input checked="" type="checkbox"/> | 9.5 hours on steady, 50 hours on flash | SKU # CKH059 |
| <input checked="" type="checkbox"/> | 9.0 hours on steady, 46 hours on flash | SKU # CKH062 |
| <input checked="" type="checkbox"/> | 9.0 hours on steady, 46 hours on flash | SKU # CKH061 |
| <input checked="" type="checkbox"/> | 9.0 hours on steady, 46 hours on flash | SKU # CKH060 |



Duplex

SKU # CKH110

CE Electrical Safety Certified Personal Safety Strobe Light
Intended for Use in Law Enforcement



Specifications

Length 2.48" (63 mm) * Width 1.89" (48 mm) * Depth 0.59" (15 mm)

0.08 lbs (38 g)

Polycarbonate material

Features

Hermetically sealed compliance with IP69

Tolerance of torture and impact

Rechargeable appliance with 700 mAh, 500 charge cycles Li-ion battery

Two operating modes

Ambient temperature from -4°F (-20°C) to 140°F (60°C)

2 hours charge time upon 5V input

437 yards (or 400 meters) visible range

S.O.S effect

Working Time

43 hours on flash

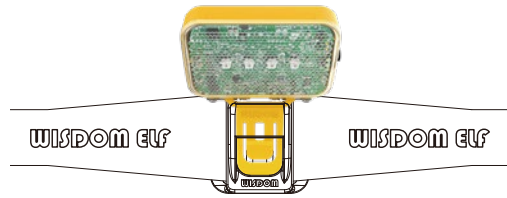
9.5 hours on steady



WISDOM ELF

SKU # CKH118

CE Electrical Safety Certified LED Headlamp
Intended for Use in MRO



Specifications

Length 2.48" (63 mm) * Width 1.81" (46 mm) * Depth 0.63" (16 mm)

0.12 lbs (55 g)

Polycarbonate material

Features

Hermetically sealed compliance with IP69

Tolerance of torture and impact

Rotatable and mountable clip onto Wisdom head strap and hard hat

Rechargeable appliance with 1,500 mAh, 500 charge cycles Li-ion battery

Four operating modes

Ambient temperature from -4°F (-20°C) to 140°F (60°C)

3 hours charge time upon 5V input

315 lumens and 2.5 hours lasting in high brightness mode, 8.5 hours in low mode

437 yards (or 400 meters) visible range on flash

S.O.S effect

Lighting Mode

☀ 8.5 hours

☀ 4.5 hours

☀ 2.5 hours

Flash Mode

■ 95 hours



Helipad

Hard Hat with Front and Rear Holders

ANSI/ISEA Z89.1-2014 Approved Type I Class G

CSA Z94.1-15 (R2024) Approved Type 1 Class G

EN 397:2012+A1:2012 Approved

AS/NZS 1801:1997+A1:1999 Approved Type 1

GB 2811-2019 Approved T Z JG

SABER Approved



Specifications

Length 12.40" (315 mm) * Width 10.63" (270 mm) * Depth 5.98" (152 mm)

0.82 lbs (370 g)

HDPE material

Features

Tolerance of torture and impact

Streamlined curved shell surface reducing aerodynamic drag

Full brim preventing face from falling water, dust and sunlight

H-shaped ribs at the apex of shell reinforcing impact-resistant performance

Built-in front holder for headlamp and rear holder for personal safety strobe light or cable

8-point suspension enhancing comfortable fit and security

Adjustable pin-lock headband ranging 53- 64 CM 6 5/8 – 8

Side-slots enabling accessories mounting

Color

White SKU # CPA002

Red SKU # CPA004

Orange SKU # CPA006

Brown SKU # CPA008

Black SKU # CPA005

Yellow SKU # CPA007

Blue SKU # CPA017

Green SKU # CPA009



Helipad

Hard Hat with Front Holder

ANSI/ISEA Z89.1-2014 Approved Type I Class G

CSA Z94.1-15 (R2024) Approved Type 1 Class G

EN 397:2012+A1:2012 Approved

AS/NZS 1801:1997+A1:1999 Approved Type 1

GB 2811-2019 Approved T Z JG

SABER Approved



Specifications

Length 12.40" (315 mm) * Width 10.63" (270 mm) * Depth 5.98" (152 mm)

0.82 lbs (370 g)

HDPE material

Features

Tolerance of torture and impact

Streamlined curved shell surface reducing aerodynamic drag

Full brim preventing face from falling water, dust and sunlight

H-shaped ribs at the apex of shell reinforcing impact-resistant performance

Built-in front holder for headlamp

8-point suspension enhancing comfortable fit and security

Adjustable pin-lock headband ranging 53- 64 CM 6 5/8 – 8

Side-slots enabling accessories mounting

Color

White SKU # CPA010

Red SKU # CPA011

Orange SKU # CPA013

Brown SKU # CPA015

Black SKU # CPA012

Yellow SKU # CPA014

Blue SKU # CPA018

Green SKU # CPA016



Panel Light

SKU # CWM002

FCC & UL & ETL Approved

CE & ERP Approved

CCC Approved



Specifications

Length 23.74" (603 mm) * Width 6.02" (153 mm) * Depth 1.26" (32 mm)

Length 23.74" (603 mm) * Width 11.93" (303 mm) * Depth 1.26" (32 mm)

Length 23.74" (603 mm) * Width 23.74" (603 mm) * Depth 1.26" (32 mm)

1.83 lbs (830 g)

Polycarbonate material

Features

Remote dimming

Optional Wi-Fi and Bluetooth control

Honeycomb omni-directional light

AC input of 100-240V 50-60Hz 40W single phase

Luminous efficacy of 140 Lm/W

Color temperature 4,000 K

CRI \geq 80

Luminous flux 5,400 Lm

Color tolerance $<$ 4

Power factor $>$ 0.9

5-year warranty





NWB-30 4.8V

SKU # CCD116

Fast-fill Portable Single Charger for Cordless Headlamp

Specifications

Width 4.49" (114 mm) * Depth 3.11" (79 mm) * Height 1.37" (35 mm)

0.32 lbs (148 g)

Polycarbonate material

Features

Tolerance of torture and impact

Easy-to-view indicator for charging state

Overvoltage, overcurrent and short circuit protection enabled

Automatically switch off upon the lamp battery topped up

Easy slide-in design with high-toughness metal shrapnel snapping the headlamp on

AC input of 100-240V 50-60Hz 0.22A 12W single phase

DC output of 4.8V 2,000mA

6.5 hours charge time with output of 4.8Vdc for Wise Lite 2

5 hours charge time with output of 4.8Vdc for Wisdom Lamp 3

5 hours charge time with output of 4.8Vdc for Wisdom Lamp 4





NWB-30 6.8V SKU # CCD090

Fast-fill Portable Single Charger for Cordless Headlamp

Specifications

Width 4.49" (114 mm) * Depth 3.11" (79 mm) * Height 1.37" (35 mm)
0.32 lbs (148 g)
Polycarbonate material

Features

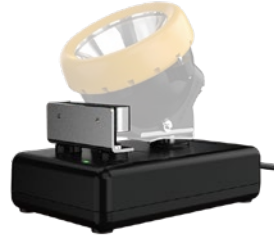
- Tolerance of torture and impact
- Easy-to-view indicator for charging state
- Overvoltage, overcurrent and short circuit protection enabled
- Automatically switch off upon the lamp battery topped up
- Easy slide-in design with high-toughness metal shrapnel snapping the headlamp on
- AC input of 100-240V 50-60Hz 0.30A 16W single phase
- DC output of 6.8V 2,000mA
- 5.5 hours charge time with output of 6.8Vdc for Wisdom Lamp 6



NWB-20

SKU # CCD112

Portable Single Charger for Corded Cap Lamp



Specifications

Width 4.56" (116 mm) * Depth 2.99" (76 mm) * Height 2.04" (52 mm)

0.42 lbs (192 g)

Polycarbonate material

Features

Tolerance of torture and impact

Easy-to-view indicator for charging state

Overvoltage, overcurrent and short circuit protection enabled

Automatically switch off upon the lamp battery topped up

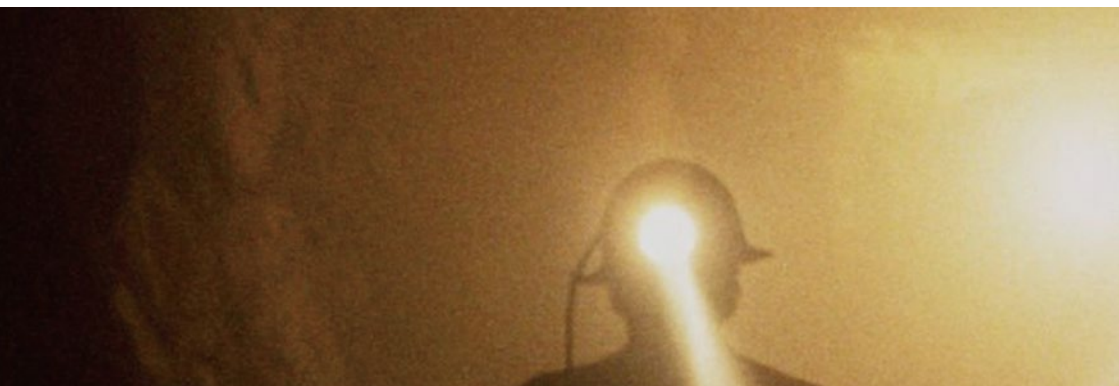
High-toughness metal shrapnel snapping the headpiece on

AC input of 100-240V 50-60Hz 0.24A 12W single phase

DC output of 4.2V 2,000mA

6.5 hours charge time with output of 4.2Vdc for Wisdom KL5M

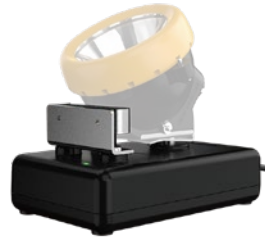
8.5 hours charge time with output of 4.2Vdc for Wisdom KL8M



NWB-25A

SKU # CCD063

Fast-fill Portable Single Charger for Corded Cap Lamp



Specifications

Width 4.56" (116 mm) * Depth 2.99" (76 mm) * Height 2.04" (52 mm)

0.45 lbs (205 g)

Polycarbonate material

Features

Tolerance of torture and impact

Easy-to-view indicator for charging state

Overvoltage, overcurrent and short circuit protection enabled

Automatically switch off upon the lamp battery topped up

High-toughness metal shrapnel snapping the headpiece on

AC input of 100-240V 50-60Hz 0.30A 15W single phase

DC output of 4.56V 2,400mA

4 hours charge time with output of 4.56Vdc for Wisdom KL5M

5.5 hours charge time with output of 4.56Vdc for Wisdom KL8M

6.5 hours charge time with output of 4.56Vdc for Wisdom KL12M



NWB-45A

SKU # CCD120

Fast-fill Portable Single Charger for Corded Cap Lamp



Specifications

Width 4.48" (114 mm) * Depth 2.99" (76 mm) * Height 0.78" (20 mm)

0.28 lbs (126 g)

Polycarbonate material

Features

Tolerance of torture and impact

Easy-to-view indicator for charging state

Overvoltage, overcurrent and short circuit protection enabled

Automatically switch off upon the lamp battery topped up

Easy slide-in design with high-toughness metal shrapnel snapping the headpiece on

AC input of 100-240V 50-60Hz 0.46A 26W single phase

DC output of 4.65V 4,500mA

2 hours charge time with output of 4.65Vdc for Wisdom KL6M

2.5 hours charge time with output of 4.65Vdc for Wisdom KL9M

4 hours charge time with output of 4.65Vdc for Wisdom KL13M



NWF-50A

SKU # CCD123

Fast-fill Portable Single Charger for Flashlight

Specifications

Width 4.48" (114 mm) * Depth 2.99" (76 mm) * Height 0.78" (20 mm)

0.27 lbs (121 g)

Polycarbonate material



Features

Tolerance of torture and impact

Easy-to-view indicator for charging state

Overvoltage, overcurrent and short circuit protection enabled

Automatically switch off upon the flashlight battery topped up

Easy plug-in design with high-toughness metal shrapnel snapping the flashlight on

AC input of 100-240V 50-60Hz 0.49A 26.2W single phase

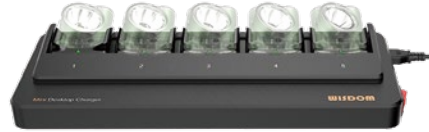
DC output of 4.2V 5,000mA

3.5 hours charge time with output of 4.2Vdc for Wisdom Aurora Pro



NWCR-5B SKU # CCJ262

Fast-fill Desktop & Wall-mounted Charging Rack
for Cordless Headlamp



Specifications

Width 18.54" (471 mm) * Depth 7.08" (180 mm) * Height 2.24" (57 mm)

5.56 lbs (2.52 kg)

Cold-formed steel material

Features

Desktop & wall-mounted unit with 5 individual outlets

Scratch-resisting electrostatic spray coating

Easy-to-view indicator for charging state

Overvoltage, overcurrent and short circuit protection enabled

Automatically switch off upon the lamp battery topped up

High-efficiency heat dissipation construction

Easy slide-in design with high-toughness metal shrapnel snapping the cordless headlamp on

AC input of 100-240V 50-60Hz 1.10/1.50A 60/80W single phase

DC output of 4.8/6.8V 2,000mA in each outlet

6.5 hours charge time with output of 4.8Vdc for Wise Lite 2

5 hours charge time with output of 4.8Vdc for Wisdom Lamp 3 / 4

5.5 hours charge time with output of 6.8Vdc for Wisdom Lamp 6



NWCR-12BL

SKU # CCJ224

Fast-fill Double Sided Charging Rack for Cordless Headlamp



Specifications

Width 11.81" (300 mm) * Depth 9.13" (232 mm) * Height 39.37" (1,000 mm)

72.75 lbs (33 kg)

Cold-formed steel material

Features

Locking mechanism enabled

Free-standing unit with 12 individual outlets

Scratch-resisting electrostatic spray coating

Easy-to-view indicator for charging state

Overvoltage, overcurrent and short circuit protection enabled

Automatically switch off upon the lamp battery topped up

High-efficiency heat dissipation construction

Easy slide-in design with high-toughness metal shrapnel snapping the cordless headlamp on

AC input of 100-240V 50-60Hz 2.64/3.60A 144/192W single phase

DC output of 4.8/6.8V 2,000mA in each outlet

6.5 hours charge time with output of 4.8Vdc for Wise Lite 2

5 hours charge time with output of 4.8Vdc for Wisdom Lamp 3 / 4

5.5 hours charge time with output of 6.8Vdc for Wisdom Lamp 6



NWCR-24BL

SKU # CCJ228

Fast-fill Double Sided Charging Rack for Cordless Headlamp



Specifications

Width 22.79" (579 mm) * Depth 9.13" (232 mm) * Height 39.37" (1,000 mm)

105.82 lbs (48 kg)

Cold-formed steel material

Features

Locking mechanism enabled

Free-standing unit with 24 individual outlets

Scratch-resisting electrostatic spray coating

Easy-to-view indicator for charging state

Overvoltage, overcurrent and short circuit protection enabled

Automatically switch off upon the lamp battery topped up

High-efficiency heat dissipation construction

Easy slide-in design with high-toughness metal shrapnel snapping the cordless headlamp on

AC input of 100-240V 50-60Hz 5.30/7.20A 288/385W single phase

DC output of 4.8/6.8V 2,000mA in each outlet

6.5 hours charge time with output of 4.8Vdc for Wise Lite 2

5 hours charge time with output of 4.8Vdc for Wisdom Lamp 3 / 4

5.5 hours charge time with output of 6.8Vdc for Wisdom Lamp 6



NWCR-36BL

SKU # CCJ232

Fast-fill Double Sided Charging Rack for Cordless Headlamp



Specifications

Width 33.85" (860 mm) * Depth 9.13" (232 mm) * Height 39.37" (1,000 mm)
145.50 lbs (66 kg)

Cold-formed steel material

Features

Locking mechanism enabled

Free-standing unit with 36 individual outlets

Scratch-resisting electrostatic spray coating

Easy-to-view indicator for charging state

Overvoltage, overcurrent and short circuit protection enabled

Automatically switch off upon the lamp battery topped up

High-efficiency heat dissipation construction

Easy slide-in design with high-toughness metal shrapnel snapping the cordless headlamp on

AC input of 100-240V 50-60Hz 7.90/10.80A 432/577W single phase

DC output of 4.8/6.8V 2,000mA in each outlet

6.5 hours charge time with output of 4.8Vdc for Wise Lite 2

5 hours charge time with output of 4.8Vdc for Wisdom Lamp 3 / 4

5.5 hours charge time with output of 6.8Vdc for Wisdom Lamp 6



NWCR-60BL

SKU # CCJ236

Fast-fill Single Sided Charging Rack for Cordless Headlamp



Specifications

Width 45.15" (1,147 mm) * Depth 7.00" (178 mm) * Height 67.63" (1,718 mm)

279.98 lbs (127 kg)

Cold-formed steel material

Features

Locking mechanism enabled

Free-standing unit with 60 individual outlets

Single sided with space-saving design

Scratch-resisting electrostatic spray coating

Easy-to-view indicator for charging state

Overvoltage, overcurrent and short circuit protection enabled

Automatically switch off upon the lamp battery topped up

High-efficiency heat dissipation construction

Easy slide-in design with high-toughness metal shrapnel snapping the cordless headlamp on

AC input of 100-240V 50-60Hz 13.20/18.00A 720/960W single phase

DC output of 4.8/6.8V 2,000mA in each outlet

6.5 hours charge time with output of 4.8Vdc for Wise Lite 2

5 hours charge time with output of 4.8Vdc for Wisdom Lamp 3 / 4

5.5 hours charge time with output of 6.8Vdc for Wisdom Lamp 6



NWCR-120BL

SKU # CCJ237

Fast-fill Double Sided Charging Rack for Cordless Headlamp



Specifications

Width 45.15" (1,147 mm) * Depth 13.97" (355 mm) * Height 67.63" (1,718 mm)

548.95 lbs (249 kg)

Cold-formed steel material

Features

Locking mechanism enabled

Free-standing unit with 120 individual outlets

Scratch-resisting electrostatic spray coating

Easy-to-view indicator for charging state

Overvoltage, overcurrent and short circuit protection enabled

Automatically switch off upon the lamp battery topped up

High-efficiency heat dissipation construction

Easy slide-in design with high-toughness metal shrapnel snapping the cordless headlamp on

AC input of 100-240V 50-60Hz 26.40/36.00A 1,440/1,920W single phase

DC output of 4.8/6.8V 2,000mA in each outlet

6.5 hours charge time with output of 4.8Vdc for Wise Lite 2

5 hours charge time with output of 4.8Vdc for Wisdom Lamp 3 / 4

5.5 hours charge time with output of 6.8Vdc for Wisdom Lamp 6



NWCR-204BL

SKU # CCJ238

Fast-fill Double Sided Charging Rack for Cordless Headlamp



Specifications

Width 72.75" (1,848 mm) * Depth 13.97" (355 mm) * Height 67.63" (1,718 mm)
753.98 lbs (342 kg)

Cold-formed steel material

Features

Locking mechanism enabled

Free-standing unit with 204 individual outlets

Scratch-resisting electrostatic spray coating

Easy-to-view indicator for charging state

Overvoltage, overcurrent and short circuit protection enabled

Automatically switch off upon the lamp battery topped up

High-efficiency heat dissipation construction

Easy slide-in design with high-toughness metal shrapnel snapping the cordless headlamp on

AC input of 100-240V 50-60Hz 44.90/61.20A 2,448/3,265W single phase

DC output of 4.8/6.8V 2,000mA in each outlet

6.5 hours charge time with output of 4.8Vdc for Wise Lite 2

5 hours charge time with output of 4.8Vdc for Wisdom Lamp 3 / 4

5.5 hours charge time with output of 6.8Vdc for Wisdom Lamp 6



NWCR-12B

SKU # CCJ040

Fast-fill Double Sided Charging Rack for Cordless Headlamp



Specifications

Width 11.81" (300 mm) * Depth 9.13" (232 mm) * Height 39.37" (1,000 mm)

68.34 lbs (31 kg)

Cold-formed steel material

Features

Free-standing unit with 12 individual outlets

Scratch-resisting electrostatic spray coating

Easy-to-view indicator for charging state

Overvoltage, overcurrent and short circuit protection enabled

Automatically switch off upon the lamp battery topped up

High-efficiency heat dissipation construction

Easy slide-in design with high-toughness metal shrapnel snapping the cordless headlamp on

AC input of 100-240V 50-60Hz 2.64/3.60A 144/192W single phase

DC output of 4.8/6.8V 2,000mA in each outlet

6.5 hours charge time with output of 4.8Vdc for Wise Lite 2

5 hours charge time with output of 4.8Vdc for Wisdom Lamp 3 / 4

5.5 hours charge time with output of 6.8Vdc for Wisdom Lamp 6



NWCR-24B

SKU # CCJ044

Fast-fill Double Sided Charging Rack for Cordless Headlamp



Specifications

Width 22.79" (579 mm) * Depth 9.13" (232 mm) * Height 39.37" (1,000 mm)

97 lbs (44 kg)

Cold-formed steel material

Features

Free-standing unit with 24 individual outlets

Scratch-resisting electrostatic spray coating

Easy-to-view indicator for charging state

Overvoltage, overcurrent and short circuit protection enabled

Automatically switch off upon the lamp battery topped up

High-efficiency heat dissipation construction

Easy slide-in design with high-toughness metal shrapnel snapping the cordless headlamp on

AC input of 100-240V 50-60Hz 5.30/7.20A 288/385W single phase

DC output of 4.8/6.8V 2,000mA in each outlet

6.5 hours charge time with output of 4.8Vdc for Wise Lite 2

5 hours charge time with output of 4.8Vdc for Wisdom Lamp 3 / 4

5.5 hours charge time with output of 6.8Vdc for Wisdom Lamp 6



NWCR-36B

SKU # CCJ048

Fast-fill Double Sided Charging Rack for Cordless Headlamp



Specifications

Width 33.85" (860 mm) * Depth 9.13" (232 mm) * Height 39.37" (1,000 mm)

136.68 lbs (62 kg)

Cold-formed steel material

Features

Free-standing unit with 36 individual outlets

Scratch-resisting electrostatic spray coating

Easy-to-view indicator for charging state

Overvoltage, overcurrent and short circuit protection enabled

Automatically switch off upon the lamp battery topped up

High-efficiency heat dissipation construction

Easy slide-in design with high-toughness metal shrapnel snapping the cordless headlamp on

AC input of 100-240V 50-60Hz 7.90/10.80A 432/577W single phase

DC output of 4.8/6.8V 2,000mA in each outlet

6.5 hours charge time with output of 4.8Vdc for Wise Lite 2

5 hours charge time with output of 4.8Vdc for Wisdom Lamp 3 / 4

5.5 hours charge time with output of 6.8Vdc for Wisdom Lamp 6



NWCR-60B

SKU # CCJ091

Fast-fill Single Sided Charging Rack for Cordless Headlamp



Specifications

Width 45.15" (1,147 mm) * Depth 7.00" (178 mm) * Height 67.63" (1,718 mm)

268.96 lbs (122 kg)

Cold-formed steel material

Features

Free-standing unit with 60 individual outlets

Single sided with space-saving design

Scratch-resisting electrostatic spray coating

Easy-to-view indicator for charging state

Overvoltage, overcurrent and short circuit protection enabled

Automatically switch off upon the lamp battery topped up

High-efficiency heat dissipation construction

Easy slide-in design with high-toughness metal shrapnel snapping the cordless headlamp on

AC input of 100-240V 50-60Hz 13.20/18.00A 720/960W single phase

DC output of 4.8/6.8V 2,000mA in each outlet

6.5 hours charge time with output of 4.8Vdc for Wise Lite 2

5 hours charge time with output of 4.8Vdc for Wisdom Lamp 3 / 4

5.5 hours charge time with output of 6.8Vdc for Wisdom Lamp 6



NWCR-120B

SKU # CCJ039

Fast-fill Double Sided Charging Rack for Cordless Headlamp



Specifications

Width 45.15" (1,147 mm) * Depth 13.97" (355 mm) * Height 67.63" (1,718 mm)
504.85 lbs (229 kg)

Cold-formed steel material

Features

Free-standing unit with 120 individual outlets

Scratch-resisting electrostatic spray coating

Easy-to-view indicator for charging state

Overvoltage, overcurrent and short circuit protection enabled

Automatically switch off upon the lamp battery topped up

High-efficiency heat dissipation construction

Easy slide-in design with high-toughness metal shrapnel snapping the cordless headlamp on

AC input of 100-240V 50-60Hz 26.40/36.00A 1,440/1,920W single phase

DC output of 4.8/6.8V 2,000mA in each outlet

6.5 hours charge time with output of 4.8Vdc for Wise Lite 2

5 hours charge time with output of 4.8Vdc for Wisdom Lamp 3 / 4

5.5 hours charge time with output of 6.8Vdc for Wisdom Lamp 6



NWCR-204B

SKU # CCJ014

Fast-fill Double Sided Charging Rack for Cordless Headlamp



Specifications

Width 72.75" (1,848 mm) * Depth 13.97" (355 mm) * Height 67.63" (1,718 mm)

709.88 lbs (322 kg)

Cold-formed steel material

Features

Free-standing unit with 204 individual outlets

Scratch-resisting electrostatic spray coating

Easy-to-view indicator for charging state

Overvoltage, overcurrent and short circuit protection enabled

Automatically switch off upon the lamp battery topped up

High-efficiency heat dissipation construction

Easy slide-in design with high-toughness metal shrapnel snapping the cordless headlamp on

AC input of 100-240V 50-60Hz 44.90/61.20A 2,448/3,265W single phase

DC output of 4.8/6.8V 2,000mA in each outlet

6.5 hours charge time with output of 4.8Vdc for Wise Lite 2

5 hours charge time with output of 4.8Vdc for Wisdom Lamp 3 / 4

5.5 hours charge time with output of 6.8Vdc for Wisdom Lamp 6



NWCR-12

SKU # CCJ116

Double Sided Charging Rack for Corded Cap Lamp



Specifications

Width 11.81" (300 mm) * Depth 9.13" (232 mm) * Height 39.37" (1,000 mm)
68.34 lbs (31 kg)
Cold-formed steel material

Features

Free-standing unit with 12 individual outlets
Scratch-resisting electrostatic spray coating
Easy-to-view indicator for charging state
Overvoltage, overcurrent and short circuit protection enabled
Automatically switch off upon the lamp battery topped up
High-efficiency heat dissipation construction
High-toughness metal shrapnel snapping the headpiece on
AC input of 100-240V 50-60Hz 2.30A 115W single phase
DC output of 4.2V 1,600mA in each outlet
7.5 hours charge time with output of 4.2Vdc for Wisdom KL5M
10 hours charge time with output of 4.2Vdc for Wisdom KL8M



NWCR-24

SKU # CCJ124

Double Sided Charging Rack for Corded Cap Lamp



Specifications

Width 22.79" (579 mm) * Depth 9.13" (232 mm) * Height 39.37" (1,000 mm)

97 lbs (44 kg)

Cold-formed steel material

Features

Free-standing unit with 24 individual outlets

Scratch-resisting electrostatic spray coating

Easy-to-view indicator for charging state

Overvoltage, overcurrent and short circuit protection enabled

Automatically switch off upon the lamp battery topped up

High-efficiency heat dissipation construction

High-toughness metal shrapnel snapping the headpiece on

AC input of 100-240V 50-60Hz 4.60A 231W single phase

DC output of 4.2V 1,600mA in each outlet

7.5 hours charge time with output of 4.2Vdc for Wisdom KL5M

10 hours charge time with output of 4.2Vdc for Wisdom KL8M



NWCR-30

SKU # CCJ132

Single Sided Charging Rack for Corded Cap Lamp



Specifications

Width 45.15" (1,147 mm) * Depth 7.00" (178 mm) * Height 67.63" (1,718 mm)

271.16 lbs (123 kg)

Cold-formed steel material

Features

Free-standing unit with 30 individual outlets

Single sided with space-saving design

Scratch-resisting electrostatic spray coating

Easy-to-view indicator for charging state

Overvoltage, overcurrent and short circuit protection enabled

Automatically switch off upon the lamp battery topped up

High-efficiency heat dissipation construction

High-toughness metal shrapnel snapping the headpiece on

AC input of 100-240V 50-60Hz 5.80A 289W single phase

DC output of 4.2V 1,600mA in each outlet

7.5 hours charge time with output of 4.2Vdc for Wisdom KL5M

10 hours charge time with output of 4.2Vdc for Wisdom KL8M



NWCR-60

SKU # CCJ134

Double Sided Charging Rack for Corded Cap Lamp



Specifications

Width 45.55" (1,157 mm) * Depth 13.97" (355 mm) * Height 67.63" (1,718 mm)
451.94 lbs (205 kg)

Cold-formed steel material

Features

Free-standing unit with 60 individual outlets

Scratch-resisting electrostatic spray coating

Easy-to-view indicator for charging state

Overvoltage, overcurrent and short circuit protection enabled

Automatically switch off upon the lamp battery topped up

High-efficiency heat dissipation construction

High-toughness metal shrapnel snapping the headpiece on

AC input of 100-240V 50-60Hz 11.50A 576W single phase

DC output of 4.2V 1,600mA in each outlet

7.5 hours charge time with output of 4.2Vdc for Wisdom KL5M

10 hours charge time with output of 4.2Vdc for Wisdom KL8M



NWCR-102

SKU # CCJ136

Double Sided Charging Rack for Corded Cap Lamp



Specifications

Width 73.11" (1,857 mm) * Depth 13.97" (355 mm) * Height 67.63" (1,718 mm)
621.70 lbs (282 kg)
Cold-formed steel material

Features

- Free-standing unit with 102 individual outlets
- Scratch-resisting electrostatic spray coating
- Easy-to-view indicator for charging state
- Overvoltage, overcurrent and short circuit protection enabled
- Automatically switch off upon the lamp battery topped up
- High-efficiency heat dissipation construction
- High-toughness metal shrapnel snapping the headpiece on
- AC input of 100-240V 50-60Hz 19.60A 980W single phase
- DC output of 4.2V 1,600mA in each outlet
- 7.5 hours charge time with output of 4.2Vdc for Wisdom KL5M
- 10 hours charge time with output of 4.2Vdc for Wisdom KL8M



NWCR-12A

SKU # CCJ120

Fast-fill Double Sided Charging Rack for Corded Cap Lamp



Specifications

Width 11.81" (300 mm) * Depth 9.13" (232 mm) * Height 39.37" (1,000 mm)

68.34 lbs (31 kg)

Cold-formed steel material

Features

Free-standing unit with 12 individual outlets

Scratch-resisting electrostatic spray coating

Easy-to-view indicator for charging state

Overvoltage, overcurrent and short circuit protection enabled

Automatically switch off upon the lamp battery topped up

High-efficiency heat dissipation construction

High-toughness metal shrapnel snapping the headpiece on

AC input of 100-240V 50-60Hz 3.60A 180W single phase

DC output of 4.56V 2,400mA in each outlet

4 hours charge time with output of 4.56Vdc for Wisdom KL5M

5.5 hours charge time with output of 4.56Vdc for Wisdom KL8M

6.5 hours charge time with output of 4.56Vdc for Wisdom KL12M



NWCR-24A

SKU # CCJ128

Fast-fill Double Sided Charging Rack for Corded Cap Lamp



Specifications

Width 22.79" (579 mm) * Depth 9.13" (232 mm) * Height 39.37" (1,000 mm)

97 lbs (44 kg)

Cold-formed steel material

Features

Free-standing unit with 24 individual outlets

Scratch-resisting electrostatic spray coating

Easy-to-view indicator for charging state

Overvoltage, overcurrent and short circuit protection enabled

Automatically switch off upon the lamp battery topped up

High-efficiency heat dissipation construction

High-toughness metal shrapnel snapping the headpiece on

AC input of 100-240V 50-60Hz 7.20A 360W single phase

DC output of 4.56V 2,400mA in each outlet

4 hours charge time with output of 4.56Vdc for Wisdom KL5M

5.5 hours charge time with output of 4.56Vdc for Wisdom KL8M

6.5 hours charge time with output of 4.56Vdc for Wisdom KL12M



NWCR-30A

SKU # CCJ133

Fast-fill Single Sided Charging Rack for Corded Cap Lamp



Specifications

Width 45.15" (1,147 mm) * Depth 7.00" (178 mm) * Height 67.63" (1,718 mm)

271.16 lbs (123 kg)

Cold-formed steel material

Features

Free-standing unit with 30 individual outlets

Single sided with space-saving design

Scratch-resisting electrostatic spray coating

Easy-to-view indicator for charging state

Overvoltage, overcurrent and short circuit protection enabled

Automatically switch off upon the lamp battery topped up

High-efficiency heat dissipation construction

High-toughness metal shrapnel snapping the headpiece on

AC input of 100-240V 50-60Hz 9.00A 450W single phase

DC output of 4.56V 2,400mA in each outlet

4 hours charge time with output of 4.56Vdc for Wisdom KL5M

5.5 hours charge time with output of 4.56Vdc for Wisdom KL8M

6.5 hours charge time with output of 4.56Vdc for Wisdom KL12M



NWCR-36A

SKU # CCJ284

Fast-fill Double Sided Charging Rack for Corded Cap Lamp

Specifications

Width 33.85" (860 mm) * Depth 8.46" (215 mm) * Height 39.37" (1,000 mm)

136.68 lbs (62 kg)

Cold-formed steel material

Features

Free-standing unit with 36 individual outlets

Scratch-resisting electrostatic spray coating

Easy-to-view indicator for charging state

Overvoltage, overcurrent and short circuit protection enabled

Automatically switch off upon the lamp battery topped up

High-efficiency heat dissipation construction

Easy slide-in design with high-toughness metal shrapnel snapping the headpiece on

AC input of 100-240V 50-60Hz 16.56A 936W single phase

DC output of 4.65V 4,500mA in each outlet

2 hours charge time with output of 4.65Vdc for Wisdom KL6M

2.5 hours charge time with output of 4.65Vdc for Wisdom KL9M

4 hours charge time with output of 4.65Vdc for Wisdom KL13M



NWCR-50A

SKU # CCJ285

Fast-fill Single Sided Charging Rack for Corded Cap Lamp



Specifications

Width 45.15" (1,147 mm) * Depth 7.00" (178 mm) * Height 67.63" (1,718 mm)

271.16 lbs (123 kg)

Cold-formed steel material

Features

Free-standing unit with 50 individual outlets

Single sided with space-saving design

Scratch-resisting electrostatic spray coating

Easy-to-view indicator for charging state

Overvoltage, overcurrent and short circuit protection enabled

Automatically switch off upon the lamp battery topped up

High-efficiency heat dissipation construction

Easy slide-in design with high-toughness metal shrapnel snapping the headpiece on

AC input of 100-240V 50-60Hz 23.00A 1,300W single phase

DC output of 4.65V 4,500mA in each outlet

2 hours charge time with output of 4.65Vdc for Wisdom KL6M

2.5 hours charge time with output of 4.65Vdc for Wisdom KL9M

4 hours charge time with output of 4.65Vdc for Wisdom KL13M



NWCR-60A

SKU # CCJ160

Fast-fill Double Sided Charging Rack for Corded Cap Lamp



Specifications

Width 45.55" (1,157 mm) * Depth 13.97" (355 mm) * Height 67.63" (1,718 mm)

451.94 lbs (205 kg)

Cold-formed steel material

Features

Free-standing unit with 60 individual outlets

Scratch-resisting electrostatic spray coating

Easy-to-view indicator for charging state

Overvoltage, overcurrent and short circuit protection enabled

Automatically switch off upon the lamp battery topped up

High-efficiency heat dissipation construction

High-toughness metal shrapnel snapping the headpiece on

AC input of 100-240V 50-60Hz 18.00A 900W single phase

DC output of 4.56V 2,400mA in each outlet

4 hours charge time with output of 4.56Vdc for Wisdom KL5M

5.5 hours charge time with output of 4.56Vdc for Wisdom KL8M

6.5 hours charge time with output of 4.56Vdc for Wisdom KL12M



NWCR-100A

SKU # CCJ257

Fast-fill Double Sided Charging Rack for Corded Cap Lamp



Specifications

Width 45.55" (1,157 mm) * Depth 13.97" (355 mm) * Height 67.63" (1,718 mm)

451.94 lbs (205 kg)

Cold-formed steel material

Features

Free-standing unit with 100 individual outlets

Scratch-resisting electrostatic spray coating

Easy-to-view indicator for charging state

Overvoltage, overcurrent and short circuit protection enabled

Automatically switch off upon the lamp battery topped up

High-efficiency heat dissipation construction

Easy slide-in design with high-toughness metal shrapnel snapping the headpiece on

3/N/PE~100-240/380-415V 50-60Hz 46.00A 2,600W three phase

DC output of 4.65V 4,500mA in each outlet

2 hours charge time with output of 4.65Vdc for Wisdom KL6M

2.5 hours charge time with output of 4.65Vdc for Wisdom KL9M

4 hours charge time with output of 4.65Vdc for Wisdom KL13M



NWCR-102A

SKU # CCJ137

Fast-fill Double Sided Charging Rack for Corded Cap Lamp



Specifications

Width 73.11" (1,857 mm) * Depth 13.97" (355 mm) * Height 67.63" (1,718 mm)

621.70 lbs (282 kg)

Cold-formed steel material

Features

Free-standing unit with 102 individual outlets

Scratch-resisting electrostatic spray coating

Easy-to-view indicator for charging state

Overvoltage, overcurrent and short circuit protection enabled

Automatically switch off upon the lamp battery topped up

High-efficiency heat dissipation construction

High-toughness metal shrapnel snapping the headpiece on

AC input of 100-240V 50-60Hz 30.60A 1,530W single phase

DC output of 4.56V 2,400mA in each outlet

4 hours charge time with output of 4.56Vdc for Wisdom KL5M

5.5 hours charge time with output of 4.56Vdc for Wisdom KL8M

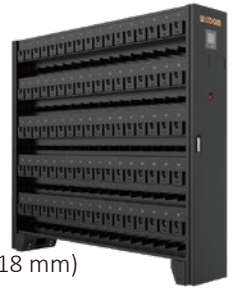
6.5 hours charge time with output of 4.56Vdc for Wisdom KL12M



NWCR-170A

SKU # CCJ279

Fast-fill Double Sided Charging Rack for Corded Cap Lamp



Specifications

Width 73.11" (1,857 mm) * Depth 13.97" (355 mm) * Height 67.63" (1,718 mm)

621.70 lbs (282 kg)

Cold-formed steel material

Features

Free-standing unit with 170 individual outlets

Scratch-resisting electrostatic spray coating

Easy-to-view indicator for charging state

Overvoltage, overcurrent and short circuit protection enabled

Automatically switch off upon the lamp battery topped up

High-efficiency heat dissipation construction

Easy slide-in design with high-toughness metal shrapnel snapping the headpiece on

3/N/PE~100-240/380-415V 50-60Hz 78.20A 4,420W three phase

DC output of 4.65V 4,500mA in each outlet

2 hours charge time with output of 4.65Vdc for Wisdom KL6M

2.5 hours charge time with output of 4.65Vdc for Wisdom KL9M

4 hours charge time with output of 4.65Vdc for Wisdom KL13M



NWFR-5A

SKU # CCJ270

Fast-fill Desktop & Wall-mounted Charging Rack for Flashlight



Specifications

Width 18.54" (471 mm) * Depth 7.08" (180 mm) * Height 1.85" (47 mm)

6.28 lbs (2.85 kg)

Cold-formed steel material

Features

Desktop & wall-mounted unit with 5 individual outlets

Scratch-resisting electrostatic spray coating

Easy-to-view indicator for charging state

Overvoltage, overcurrent and short circuit protection enabled

Automatically switch off upon the flashlight battery topped up

High-efficiency heat dissipation construction

Easy plug-in design with high-toughness metal shrapnel snapping the flashlight on

AC input of 100-240V 50-60Hz 2.45A 128W single phase

DC output of 4.2V 5,000mA in each outlet

3.5 hours charge time with output of 4.2Vdc for Wisdom Aurora Pro



NWBR-8A SKU # CCJ289

Fast-fill Desktop Charging Rack for
Personal Safety Strobe Light & Industrial Safety Headlamp



Specifications

Length 13.43" (341 mm) * Depth 7.01" (178 mm) * Height 1.18" (30 mm)

2.60 lbs (1.18 kg)

Plastic & cold-formed steel material

Features

Desktop unit with 8 individual outlets

Easy-to-view indicator for charging state

Overvoltage, overcurrent and short circuit protection enabled

Automatically switch off upon the light battery topped up

High-efficiency heat dissipation construction

Easy absorption design with high-toughness metal contact snapping the light on

AC input of 100-240V 50-60Hz 0.80A 40.2W single phase

DC output of 5V 875mA in each outlet

DC output with USB Type A & C of 5V/3A 9V/3A 12V/3A in each outlet

2 hours charge time with output of 5Vdc for Wisdom Pharos 7

2 hours charge time with output of 5Vdc for Wisdom Duplex

3 hours charge time with output of 5Vdc for Wisdom ELF



NWBR-144A SKU # CCJ293

Fast-fill Single Sided Charging Rack for
Personal Safety Strobe Light & Industrial Safety Headlamp



Specifications

Width 45.51" (1,156 mm) * Depth 6.81" (173 mm) * Height 67.64" (1,718 mm)

271.17 lbs (123 kg)

Cold-formed steel material

Features

Free-standing unit with 144 individual outlets

Single sided with space-saving design

Scratch-resisting electrostatic spray coating

Easy-to-view indicator for charging state

Overvoltage, overcurrent and short circuit protection enabled

Automatically switch off upon the light battery topped up

High-efficiency heat dissipation construction

Easy absorption design with high-toughness metal contact snapping the light on

AC input of 100-240V 50-60Hz 12.00A 723W single phase

DC output of 5V 875mA in each outlet

2 hours charge time with output of 5Vdc for Wisdom Pharos 7

2 hours charge time with output of 5Vdc for Wisdom Duplex

3 hours charge time with output of 5Vdc for Wisdom ELF



BUILDING A
WORLD-CLASS
BRAND

WISDOM

